

ATTACHMENTS



Digger



Backhoe



Rock bucket



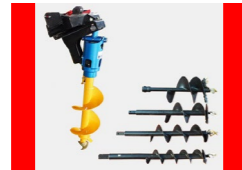
Breaker



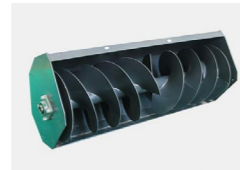
Trencher



Ripper



Auger



Trench filler



Pallet fork



Lawn ripper



Sweeper



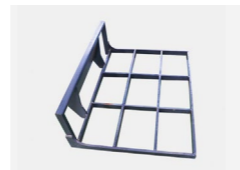
Mixer



Closed sweeper



Grapple



Leveller



Snow blower



Lawn mower



Angle blade

 **OZDIGGERS**

THE TOP DIGGERS FOR DOWN UNDER
RELIABLE. AUSSIE OWNED & OPERATED.

FINANCE AVAILABLE

Contact us for details:

NSW OFFICE

Jamie Bella
PH: +61 499 825 999
jamie@ozdiggers.com.au
<http://www.ozdiggers.com.au/>

QLD OFFICE

David Bella
PH: +61 414 486 428
david@ozdiggers.com.au
<http://www.ozdiggers.com.au/>



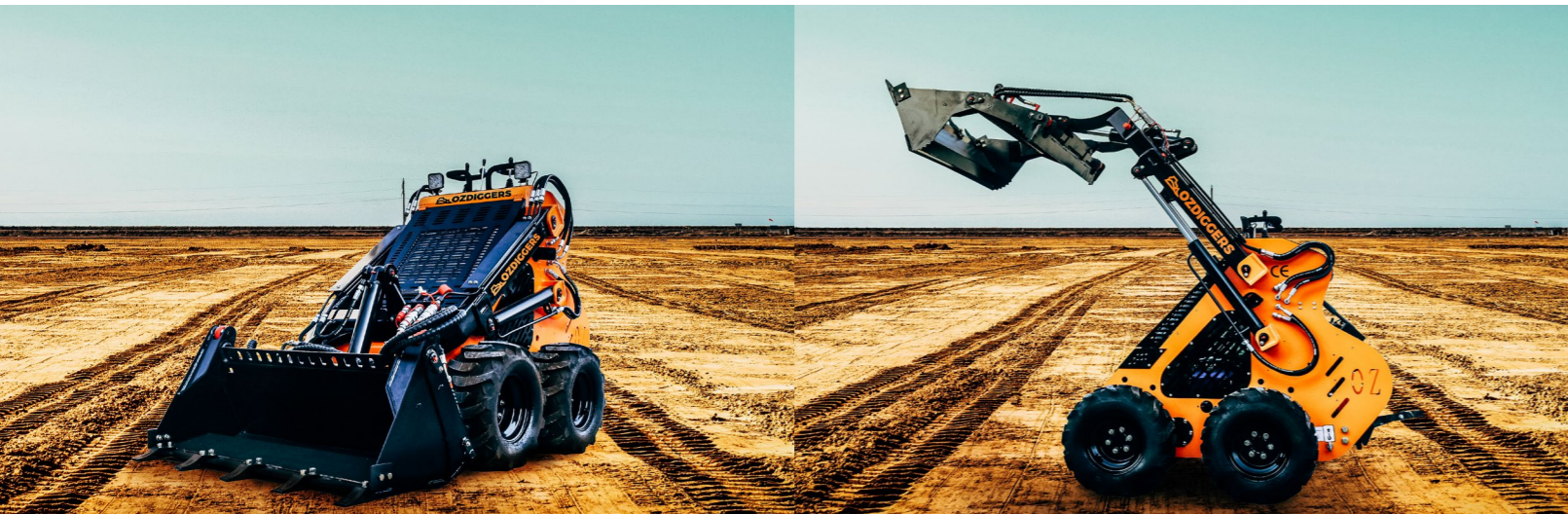
PETROL MINI SKID
STEER LOADER



ABOUT US

Ozdiggers manufacture premium quality earthmoving machinery to supply Australia with the most reliable equipment on the ground, and on the market.

Our Mini Skid Steer Loader is reliable, safe and built to deliver maximum performance for Australia's most demanding environments. Designed by Australians, for Australians, OzDiggers Mini Skid Steer Loaders are for those who like to get it done, and get it done right.



SPECIFICATIONS

POWER

Make	Brigg & Stratton "Vanguard"
Fuel type	Petrol - Unleaded
Rating power	17.3kw
Cylinders	V-Twin 2 Cylinder
Displacement	1627cc
Rated speed	3600 rpm
Max drive speed	6km/h
Electrical Voltage	12 V
Battery type	45AH made by YUASA

HYDRAULIC SYSTEM

System pressure	180 bar
Flow rate	58 L/min

FLUID CAPACITIES

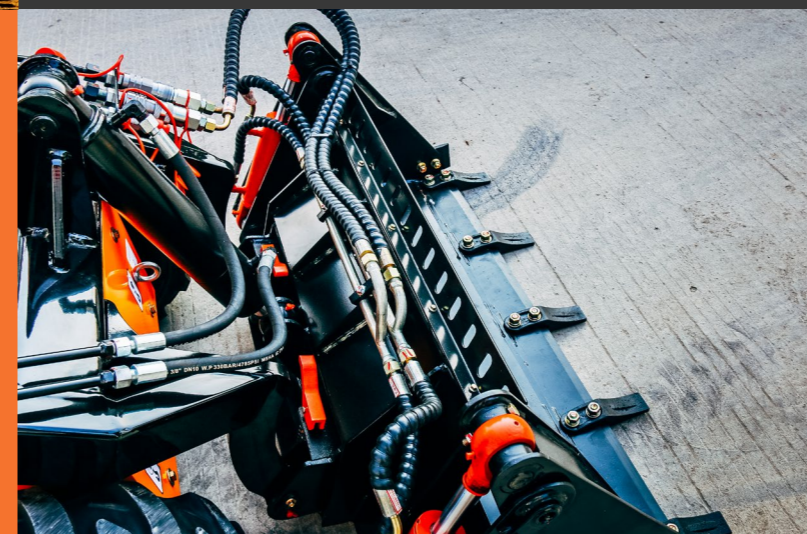
Fuel tank capacity	23 L
Engine Oil	1.5 L
Hydraulic Reservoir capacity	30 L

PETROL MINI SKID STEER LOADER

DIMENSIONS

Operating height	2452mm
Height to bucket hinge pin	1914mm
Height to top	1370mm
Overall length with GP bucket	2170mm
Overall length without bucket	1740mm
Wheelbase	657mm
Overall width	1150mm
Min ground clearance	140mm
Angle of departure	23°
Turning radius front without bucket	801mm
Front turning radius	1282mm
Rear turning radius	1026mm
Tread width, centerline to centerline	960mm

OD-127W WHEELED



FEATURES

- 17.2kw, V-twin 2 cylinder Briggs & Stratton Engine
- Italian HC control valve
- Japan NSK bearing, 60H strong chains
- Big aluminium radiator, LED lights
- 400kg load capacity
- 3600 rpm rated speed.
- Modular Attachment System
- Designed by Australians for Australians